

GLEN

Live Better !

USER'S GUIDE

OIL FILLED HEATER

GL 7011



+2
YEARS
conditions apply

GLEN
2YEARS
EXTENDED
WARRANTY

To register Log on to
www.glenindia.com

IS : 302-2-30



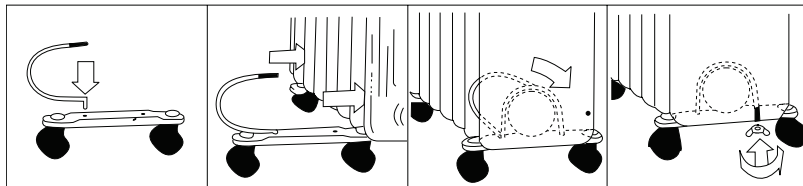
CM/L-9861303

Identifying Your Oil Filled Heater



Using Your Oil Filled Heater

Remove the heater and all the accessories from the carton. The Oil filled heater is packed with the castor wheels unattached. Attach the wheels before operating as explained below:



ASSEMBLY

- Place the heater body upside-down on a scratch-free location, make sure it is stable and will not fall.
- Screw off the wing nuts from the u-shaped bolt provided. Attach the u-shaped bolt to the flange between first and second fins (near the front cover).
- To attach the castor mounting plate to the heater body, insert the threaded ends of the u bolt in the holes on the castor mounting plate.
- Screw the wing nuts back to the u bolt and fasten the wing nut properly. Do not over tighten, this may damage the heater flange.
- The rear flange must be mounted between the end two fins.

Caution: Do not operate without wheels attached. Operate the Oil Filled Heater only in up right position (wheels on the bottom, controls on the top), any other position could create a hazardous situation.


USAGE

Place the heater on the floor at least 90cm away from the wall and any other objects such as furniture, curtains or plants. (Make sure the power supply used corresponds to the one on the rating label). With the thermostat control switch in the "O" position and the power setting switch in the "OFF" position; plug the heater into the mains power supply.

Thermostat: The desired room temperature can be adjusted using the thermostat. Simply turn the thermostat knob clockwise, to increase the heat, and anti-clockwise to decrease the temperature.

Power: Switch the heater to the desired power setting. The power switch lights up when activated.

Fins	Switch Position	Watts
9	I	800
	II	1200
	I & II	2000
	Fan	400
11	I	800
	II	1200
	I & II	2000
	Fan	400
13	I	1000
	II	1500
	I & II	2500
	Fan	400

Turbo: The Glen Oil Filled Heater GL 7011 is fitted with a heating fan which warms the room more quickly. To turn this function ON, push the button .

A safety device, the overload protector, switches off the appliance if it overheats due to an accumulation of dust on the air intake and output grills. To restart it, unplug from the mains and leave the appliance to cool down. Clean the air intake and output grills with a vacuum cleaner, then replug into the mains and turn on again. Do not cover the heater at any time during operation. There is a risk of fire if the heater is covered. After use switch off the power, set the thermostat control switch to the "0" position and unplug from the mains supply.

CLEANING

Always disconnect the heater from the mains supply before cleaning. Clean the outside of the heater with a damp cloth. DO NOT use waxes or polishes as these may react with the heater and cause discoloration.

STORAGE

Save the box for off season storage. Clean the heater following the cleaning instructions above. Remove the wheel base assemblies. Place the heater, and wheel assemblies in the original box, and store in a cool and dry place. If you choose to store your heater fully assembled be sure to cover it to protect it from dust.

Safety Precautions

- Always disconnect the heater from the mains supply when not in use and when cleaning.
- Do not leave the heater "ON" unattended.
- Never cover the heater as this may lead to risk of fire.
- Keep the heater at distance of at least 90cm from any combustible material, such as furniture, curtains, bedding clothes or papers.
- Do not attempt to open any part of the oil fins.
- Keep the heater clean. Do not allow objects to enter the ventilation, as this may cause electric shock, fire or damage the heater.
- Close supervision is required when any appliance is used near or by children.
- Never allow the cord to touch wet or hot surfaces, become twisted or be within the reach of children.
- Do not use outdoors.
- Do not place on or near a hot gas or electric burner.
- Never use the appliance with a damaged cord or plug or after the appliance has malfunctioned or been damaged in any way.
- Never attempt to open any part or dismantle the controls. Responsibility for failure cannot be accepted if these instructions have been ignored.
- Do not use the appliance for anything other than its intended use.
- This appliance is intended for household use only.
- The appliance is not intended for use by young children or infirm persons without supervision.
- Do not use this heater in the immediate surroundings of a bath, a shower or a swimming pool.
- This heater is filled with a precise quantity of special oil. Repairs requiring opening of the oil container are only to be made by the manufacturer or his service agent who should be contacted if there is an oil leakage. Regulations concerning the disposal of the oil when scrapping the appliance has to be followed.

Warranty

GLEN APPLIANCES PVT. LTD. warrants to get the Oil Filled Heater or any part thereof repaired free of charge for a period of one year from the date of purchase, should any defect develop due to faulty or defective workmanship or material.

Terms to Warranty

- The Bill/Cash Memo should be presented.
- No repair work should be carried out by any unauthorised person.
- The Oil Filled Heater should be used as per the directions given in the user's guide. Any defects caused by improper or reckless use are not covered under warranty.
- No modification/alteration of any nature is made in the Oil Filled Heater.
- The company accepts no responsibility for any consequential losses arising out of misuse or negligence on the part of the user.

PRODUCT : OIL FILLED HEATER GL 7011
- 9 | 11 | 13 FINS

SERIAL NO. _____

DATE OF PURCHASE _____

NAME OF OWNER _____

ADDRESS _____

BILL NO. _____ DATE _____

Specifications

Input Voltage : 230V ~ 50 Hz AC

Power Consumption :

Fins	Watts	Fan (W)
9	2000	400
11	2000	400
13	2500	400

Packaging List : Heater Assy. - 1, Castors with Nuts - 4 each
U Bolt - 2, Plate - 2, Wing Nut - 2,
User manual cum warranty card -1

+2 Years Extended Warranty

Here comes another Glen advantage !

Now you can register yourself for a free +2 Years Extended Warranty on the appliance you just purchased to get that enhanced peace of mind.

To avail this offer :

- Log on to www.glenindia.com and click on the +2 Years Extended Warranty icon.
- An application form will pop up.
- Please fill the details, the product name, the model number, the serial number, date of purchase, Invoice number, dealer name and your personal details.
- Please ensure that all details filled are correct and match with the Invoice and the product purchased.
- Press submit. A confirmation e-mail will be sent on your e-mail ID. Keep a print of the confirmation safely along with the original Invoice to use the +2 Years Extended Warranty anytime in future.

Note : The +2 Years Extended Warranty offer is absolutely free. The offer is available only for 90 days from the date of purchase of the appliance. In case the same is not availed it lapses automatically.

As the offer is free of cost the company is not obliged to refund or return any claims in lieu for the same.

DEALER'S STAMP & SIGNATURE

GLEN APPLIANCES PVT. LTD.

I-34, DLF Ind. Area, Phase-I, Faridabad, India.

Helpline: 9548-130-131

E-mail : cr@glenindia.com Website : www.glenindia.com