

**SPECIFICATIONS\***

|                       |                                    |                         |   |
|-----------------------|------------------------------------|-------------------------|---|
| Voltage               | : 230 V AC 50 Hz                   | Speed Control           | : PUSH START - SINGLE SPEED             |
| Power                 | : 250 W                            | Motor Speed (RPM)       | : 3600 (approx) - No Load.              |
| Rating                | : 1 Minute Maximum -<br>Continuous | Weight                  | : 0.9 kgs approx                        |
| Material (Motor Unit) | : A.B.S.                           | Carton Dimensions       | : 130 x 130 x 250 (GL 4043)             |
| (Bowl)                | : Poly Carbonate                   | (mm) (w x d x h)        | : 130 x 130 x 345 (GL 4043 PLUS)        |
|                       |                                    | Capacity Liquidiser Jar | : 400 ml. max. (Depends on Ingredients) |

\*Subject to change without prior notice.

**PACKING LIST**

GL 4043 : Main Unit, Bowl (1 nos.), Bowl Cover, SS Blade, Whisking Disc, User's Guide.  
GL 4043 PLUS : Main Unit, Bowl (2 nos.), Bowl Cover, SS Blade, Whisking Disc, User's Guide.

PRODUCT NAME : MINI CHOPPER      MODEL NO.: GL 4043 / GL 4043 PLUS

SERIAL NO.: \_\_\_\_\_ BILL NO. & DATE: \_\_\_\_\_

NAME OF OWNER: \_\_\_\_\_ ADDRESS: \_\_\_\_\_

DEALER'S STAMP & SIGNATURE

**Glen Appliances P t. Ltd.**

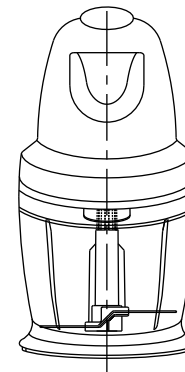
EPIP Phase II, Thana Baddi, Tehsil Nalagarh, Distt. Solan (H.P.)

Head Office : I-34, DLF Industrial Area Phase-I, Faridabad - 121 003  
Helpline : 0129-2254191 Fax : 0129-2274344  
E-mail : info@glenindia.com Website : www.glenindia.com

# GLEN

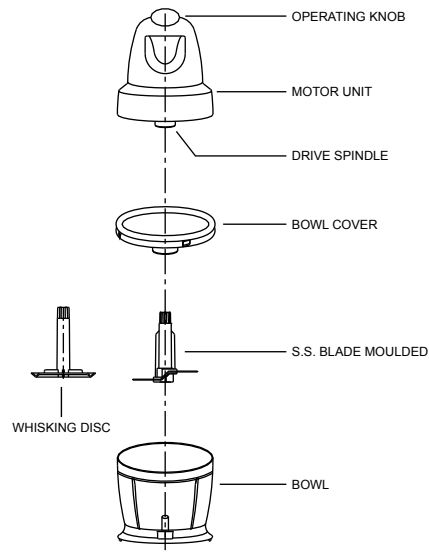
Live Better !

MINI CHOPPER  
GL 4043 / GL 4043 PLUS



USER'S GUIDE

### Identify Your Mini Chopper GL 4043 / GL 4043 Plus



### Using Your Mini Chopper

- Slide chopping blade inside the bowl on S.S. pin. Put ingredients to be processed in the bowl.
- Place bowl cover on bowl, make sure it fits properly into slots of bowl. Place the Motor Unit on the bowl cover.

- Plug the unit & check by pressing the operating knob, that SS Blade/Whisker is properly located into drive spindle. Mini Chopper is ready for use.
- Press the operating knob in short intervals to see the consistency you need.
- Do not run the unit for a long duration as the motor is designed for a maximum run of 60 seconds at one go. Most of the functions, like, making puree, chopping, ice crushing, whisking, takes 15-30 sec. max.
- Some foods like carrot may discolor the plastic. To remove this rub with a cloth dipped in vegetable oil immediately after finishing your job.
- The Motor Unit should be wiped with a wet soft cloth. Never immerse it in water.
- Ensure that all the components are dry before storing.

### Warranty

This Glen Mini Chopper is fully warranted against any defect arising out of defective materials or faulty workmanship for a period of one year from the date of purchase. Should any defect develop in this product, the customer should bring the product to nearest authorized service centre, where the company undertakes to get the product repaired free of charge.

### Warranty Is Not Valid If

- The use and care instructions have not been followed.
- Defects are caused by accident, misuse, abuse or commercial use.
- Plastic parts are not covered under this warranty.
- The repair work is carried out by persons not authorised by the company.
- Any modification or alteration of any nature is made in the product.
- Normal wear & tear of the product is not covered under warranty
- The bill/cash memo and copy of warranty card is not presented.

Under no circumstances, whether based on limited warranty or otherwise shall the company be liable for incidental, special or consequential damages. Use of product indicates acceptance by you of the aforesaid terms and conditions.