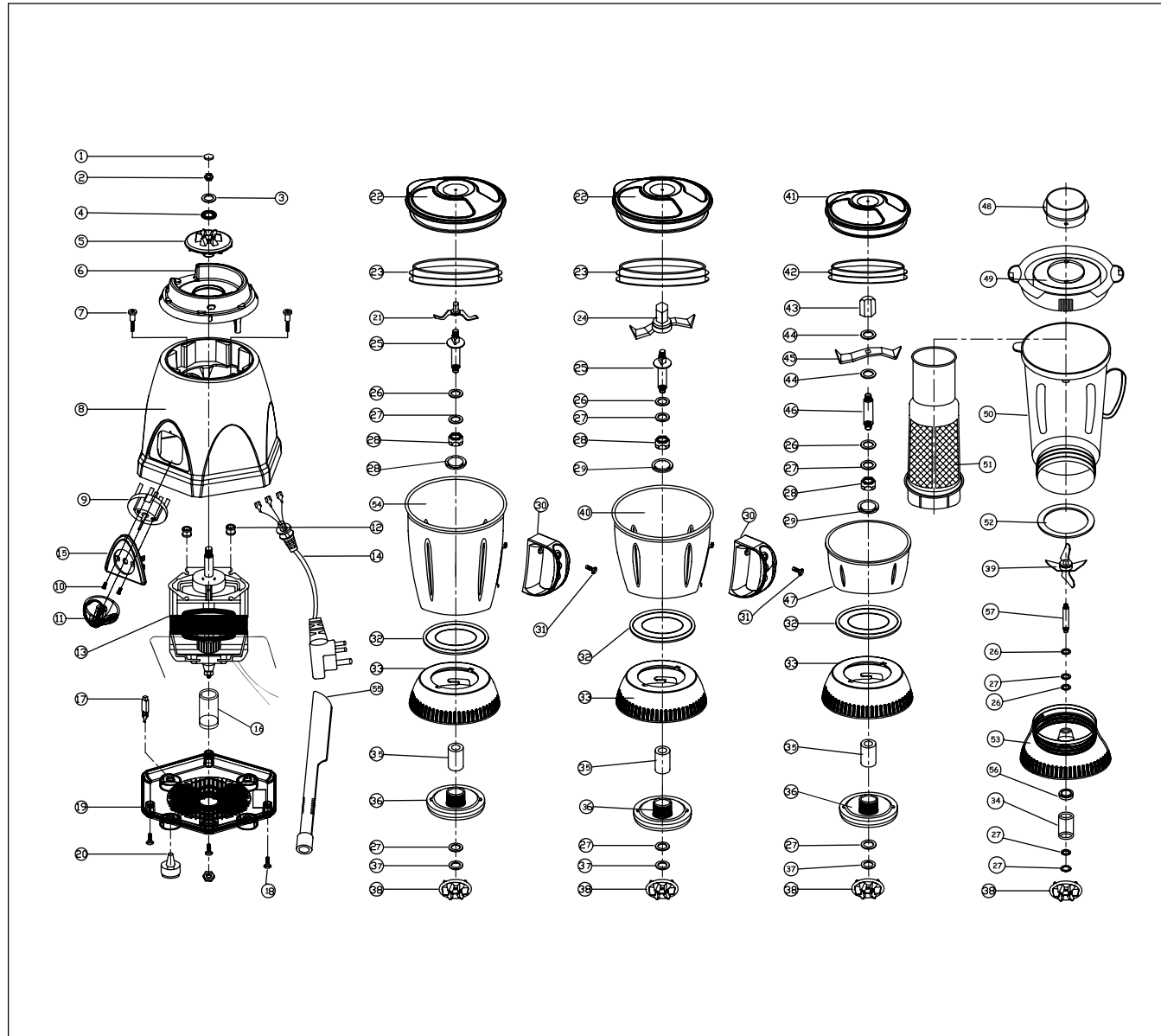


Mixer Grinder GL 4026 Plus



Ref. No.	Spare Part List	SAP Code
1	CAP FOR COUPLER	40001253
2	M5 HEX NUT (L)	
3	PLAIN WASHER DIA 6.00 MM	
4	STARE WASHER DIA 6.00 MM	
5	COUPLER MG 4022	40001206
6	TOP GUIDE MG 4022	40001204
7	MOTOR MOUNTING STUD MG 4022	40001266
8	MAIN BODY MG 4023	40001309
9	ROTARY SWITCH MG 4025	40001485
10	SCREW CSK M4 X 10.00 MM	
11	KNOB MG 4023	40001308
12	MOTOR MOUNTING PAD MG 4022	40001258
13	UV MOTOR 650 WT MG 4026	40001848
14	WIRE LEAD 3 PIN	40001226
15	SWITCH PLATE MG 4023	40001311
16	MOTOR RESTING PAD	40001864
17	CIRCUIT BREAKER 2.2 Amp MG 4022	40001212
18	SCREW 8 X 16 MM	
19	BASE PLATE MG 4023	40001304
20	RUBBER FEET MG 4022	40001251
21	LIQ JAR BLADE ASSY MG 4026	40001844
22	BIG LID MG 4026	40001831
23	GRINDER JAR RING MG 4022	40001261
24	GRINDER BLADE ASSY MG 4026	40001845
25	SPINDLE WITH CAP MG 4022	40001222
26	SPRING WASHER DIA. 8.00 MM	
27	FIBRE WASHER DIA. 8.00 MM	
28	HEX NUT GRINDER JAR COLLAR MG 4025	40001501
29	NYLON WASHER MG 4025	40001500
30	HANDLE MG 4022	40001209
31	S.S. SCREW M4 X 8.00 MM	
32	GASKET JAR COLLAR MG 4026	40001847
33	JAR COLLAR MG 4023	40001307
34	SINTERED BUSH 19 MM (089)	40001391
35	SINTERED BUSH 25 MM (089)	40001216
36	AL. COLLAR MG 4026	40001843
37	S.S. PLAIN WASHER DIA. 6.00 MM	
38	RUBBER COUPLING MG 4022	40001265
39	LIQUIDISER JAR BLADE GL 4014	40001558
40	GRINDER JAR S.S. MG 4026	40001833
41	SMALL LID MG 4026	40001842
42	CHUTNEY JAR RING MG 4022	40001263
43	DOME NUT M6 (BRASS)	
44	SQ. WASHER	
45	CHUTNEY BLADE MG 4026	40001846
46	CHUTNEY SPINDLE MG 4022	40001223

Ref. No.	Spare Part List	SAP Code
47	CHUTNEY JAR S.S. MG 4026	40001834
48	R.C. CAP LIQ. JAR GL 4014	40001386
49	LID LIQ. JAR GL 4014	40001384
50	LIQ. JAR FRUIT FILTER & GL 4014	40001302
51	FRUIT FILTER	40001393
52	GASKET LIQ. JAR SAN MG 4022	40001392
53	COLLAR LIQ. JAR SAN MG 4022	40001387
54	LIQUIDISER JAR S.S. MG 4026	40001832
55	SPATULA MG 4022/23/51	40001310
56	OIL SEAL MG 4022	40001264
57	SPINDLE LIQ. JAR SAN MG 4026	40001839